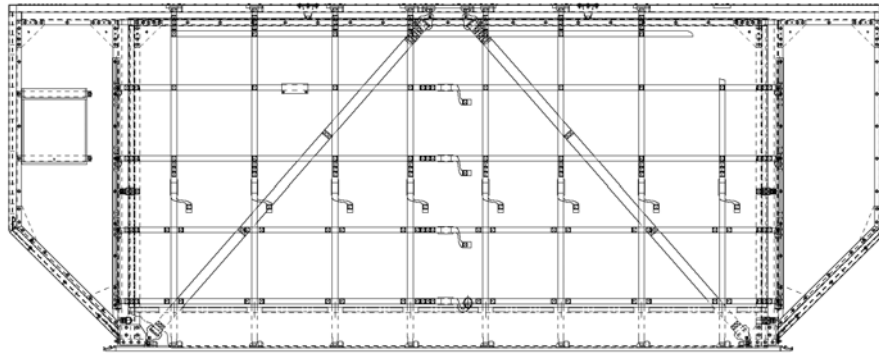


TECHNICAL DATA SHEET AAF CONTAINER
STANDARD CONFIGURATION

1. ULD type (IATA code) : AAF (LD26)
2. Description : Lower deck air cargo container
3. Usage : General cargo and baggage
4. Contour / front view :



5. Dimensions : Base = 88" x 125" (2235 x 3175 mm)
Height = 63,6" (1614,5 mm)
6. Tare weight : 250 kg / 551 lb
7. Maximum Gross Weight : 6033 kg / 13300 lb
8. Sheet alloy / thickness :

Roof	6082-T6 / 0.7 mm
Upper outboards	6082-T6 / 0.9 mm
Lower outboards	6082-T6 / 1.2 mm
Shears	6082-T6 / 0.7 mm
Aft	6082-T6 / 0.9 mm
Base	7021-T6 / 4.0 mm
9. Extrusion alloy :

Base	7003-T6 (weldable)
Structure	7003-T6
10. Fasteners : Lockbolts, rivets
11. Stiffeners :
 - 5 in roof panel
 - 4 in aft panel
 - 3 in lower and upper outboard panels
12. Door :
 - Reinforced door posts and front header
 - Flexible canvas door with net
 - 4 horizontal straps
 - 8 vertical straps
 - 2 diagonal straps
13. Gussets : In each corner
14. Others :
 - Grasp handles on each corner
 - Document holder
 - Manufacturing plate
 - Tie down points attached along base edge rails
15. Flammability : FAR 25.853
16. Certification standard : TSO C90c / NAS3610-2A2C
17. Certified by : EASA / FAA
18. Driessen p/n : **AA-F-N1**