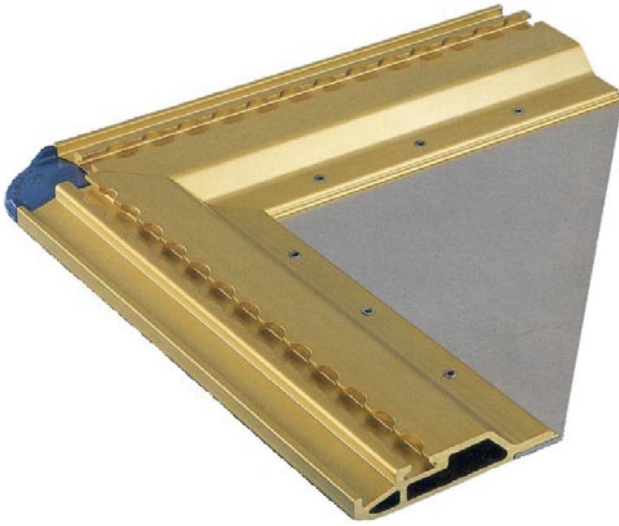

**B757 Freighter PAJ Cargo Pallet**

## PAJ Cargo Pallet

The pallet design, consisting of all aluminium parts has a two chamber hollow extrusion with press fitted high tensile aluminium forgings and extruded corner reinforcements (inserted) resulting in high rigidity. Due to the non-welded design, damaged edge rails can easily be replaced. No cutting, rewelding or deburring is required.

### General specifications

Design	According to NAS 3610-2A6P; TSO-C90
MGW	15000 lb/6804 kg
Max. dimensions	88x125 in.
Sheet thickness	0.157 in. / 4 mm

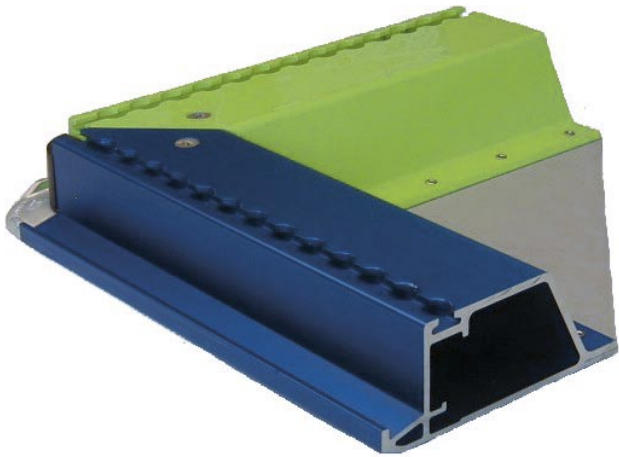


**Pallet options:**

- Powder-coating or anodizing in various colours on request (edge rails and / or corners optional)
- Airline code or logo sandblasted and painted onto the sheet
- Additional engravings on edge rails
- Base sheet thickness 0.189 in./4.8 mm

Part Number	Tare Weight (typical)
081203	212 lb/ 96 kg
081403	212 lb/ 96 kg

Part Number	Tare Weight (typical)
081204	242 lb/110 kg
081404	242 lb/110 kg



**Pallet options:**

- Powder-coating or anodizing in various colours on request (edge rails and / or corners optional)
- Airline code or logo sandblasted and painted onto the sheet
- Additional engravings on edge rails
- Base sheet thickness 0.189 in./4.8 mm

Part Number	Tare Weight (typical)
081243	273 lb/124 kg

Part Number	Tare Weight (typical)
081244	304 lb/138 kg