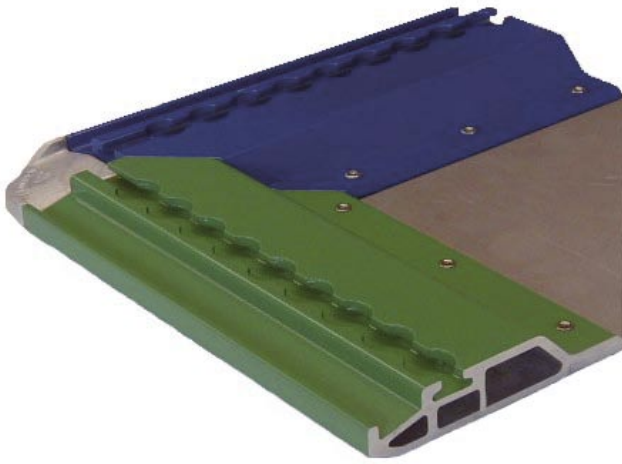


PKC Cargo Pallet

The pallet design, consisting of all aluminium parts has a two chamber hollow extrusion with press fitted high tensile aluminium forgings and extruded corner reinforcements (inserted) resulting in high rigidity. Due to the non-welded design, damaged edge rails can easily be replaced. No cutting, rewelding or deburring is required.

General specifications

Design	According to NAS 3610-2K3P; TSO-C90
MGW	3500 lb/1587 kg
Max. dimensions	60.4x61.5 in.
Sheet thickness	0.106 in. / 2.7 mm



Pallet options:

- Powder-coating or anodizing in various colours on request (edge rails and / or corners optional)
- Airline code or logo sandblasted and painted onto the sheet
- Additional engravings on edge rails
- Base sheet thickness 0.118 in./3 mm

Part Number	Tare Weight (typical)
081237	75 lb/34 kg

Part Number	Tare Weight (typical)
081238	79 lb/36 kg