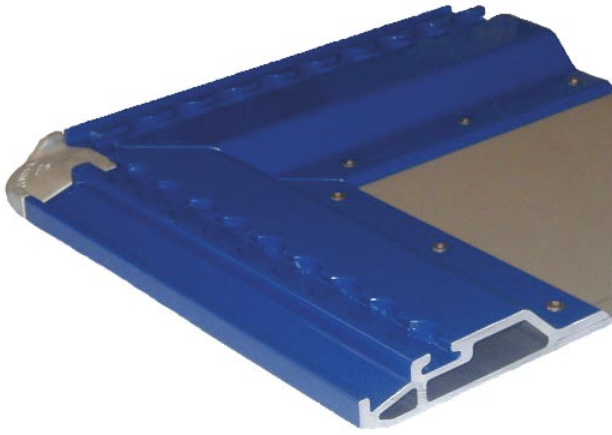


## PMC Cargo Pallet

The pallet design, consisting of all aluminium parts has a two chamber hollow extrusion with press fitted high tensile aluminium forgings and extruded corner reinforcements (inserted) resulting in high rigidity. Due to the non-welded design, damaged edge rails can easily be replaced. No cutting, rewelding or deburring is required.

### General specifications

Design	According to NAS 3610-2M3P; TSO-C90
MGW	15000 lb/6804 kg
Max. dimensions	96x125 in.
Sheet thickness	0.157 in. / 4 mm



**Pallet options:**

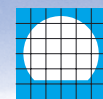
- Powder-coating or anodizing in various colours on request (edge rails and / or corners optional)
- Airline code or logo sandblasted and painted onto the sheet
- Additional engravings on edge rails
- Base sheet thickness 0.189 in./4.8 mm

Part Number	Tare Weight (typical)
081208	229 lb/104 kg
081408	229 lb/104kg

Part Number	Tare Weight (typical)
081209	264 lb/120 kg
081409	264 lb/120 kg

[www.driessen.com](http://www.driessen.com)

Air Cargo Equipment • Trolleys • Galley Structures  
Galley Equipment • First Class Monuments • Crewrests



**DRIESSEN**

**Driessen Europe**

De Stek 1,  
PO Box 28  
1770 AA Wieringerwerf  
The Netherlands  
Phone +31 227 606 161  
Fax +31 227 606 120  
Email [europe@driessen.com](mailto:europe@driessen.com)

**Driessen USA**

3340 C. Greens Rd.  
Suite 300  
Houston, TX 77032  
USA  
Phone +1 281 590 0300  
Fax +1 281 590 0308  
Email [houston@driessen.com](mailto:houston@driessen.com)

**Driessen Asia Pacific**

Asia Pacific Region Sales Office  
4 Loyang Crescent  
Singapore 508979  
Singapore  
Phone +65 65 465 486  
Fax +65 65 465 487  
Email [singapore@driessen.com](mailto:singapore@driessen.com)